

<b>DUTY CYCLE RATING</b>	100%: 600 amp with CO <sub>2</sub> gas and mixed gases (Ratings are based on tests that comply with IEC 60974-7 standards)
<b>PROCESSES</b>	MIG (GMAW) Welding
<b>INDUSTRY</b>	• General Manufacturing & Fabrication • Heavy Equipment
<b>WELDING APPLICATIONS</b>	• Fixed/hard automation • Long repeatable seams • Fixed orbital

## ENSURE CONSISTENT HIGH-QUALITY WELDS WHILE REDUCING DOWNTIME FOR MAINTENANCE AND REPAIRS

Tregaskiss® AW2 fixed automatic water-cooled MIG guns, also referred to as machine torches, are designed for dependable performance in high amperage, high temperature hard tooling welding applications.

Maintenance personnel appreciate the simplicity of the gun design with internal threaded connections that stay tight inside the anti-vibration compression fit body for good electrical connectivity. This leads to longer life and minimal replacement parts.

Choose from 9.25" (23.5 cm) or 12.25" (31.1 cm) barrel lengths to better reach the weld. Available with or without a cable, this MIG gun adapts easily to most applications.



## AccuLock™

AccuLock™ R consumables are designed for increased tip life and replacement accuracy, which can reduce your replacement frequency and related downtime.



**CABLE LENGTH FLEXIBILITY**  
CHOOSE FROM CABLE LENGTHS RANGING FROM 3' TO 25'



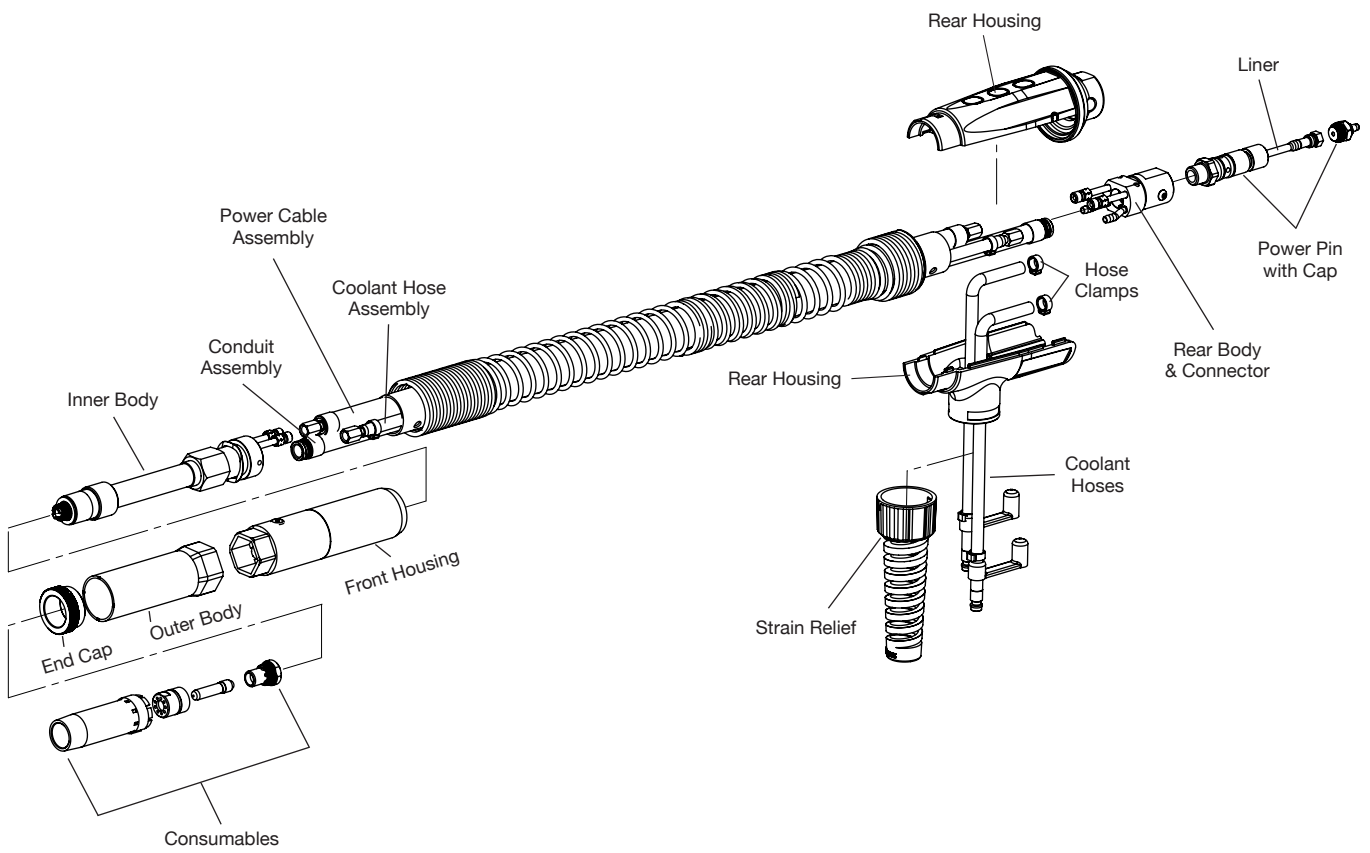
**QUICK AND EASY MAINTENANCE**  
SIMPLE DESIGN MAKES MAINTENANCE EASY AND QUICK



**MINIMAL REPLACEMENT PARTS**  
FEW REPLACEMENT PARTS RESULTS IN LOW INVENTORY COSTS

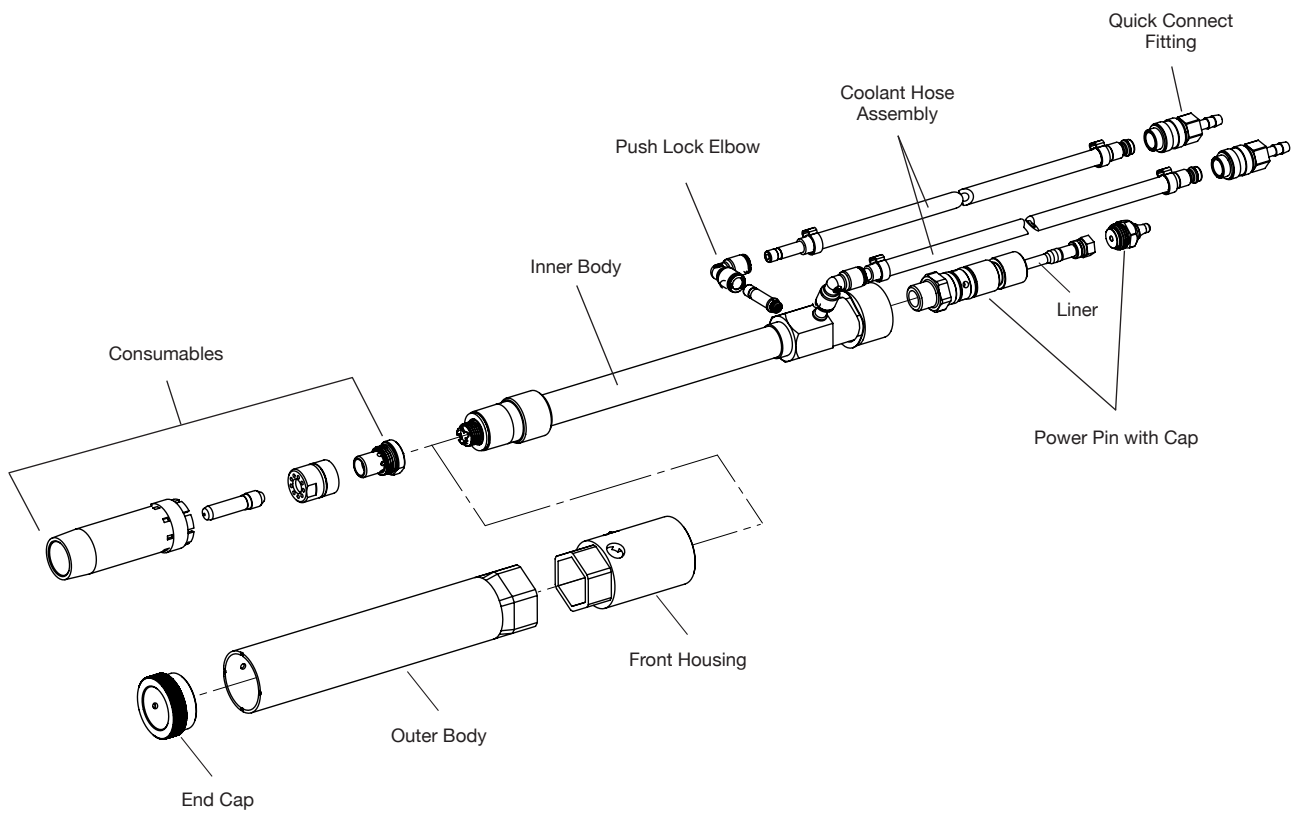
# SYSTEM COMPONENTS

## WITH CABLE



# SYSTEM COMPONENTS

## WITHOUT CABLE



# KNOW YOUR OPTIONS

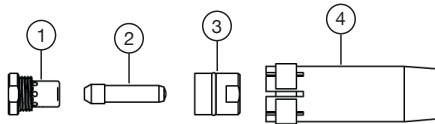


## ACCULOCK™ R (ROBOTIC) CONSUMABLES

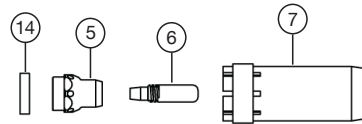
Eliminate contact tip cross-threading issues with new AccuLock™ R consumables. These new consumables are designed for increased tip life, which can reduce replacement frequency and related downtime. AccuLock™ HDP contact tips can increase life by an additional 10x or more in pulse welding applications. In most cases, your current tip and diffuser can be replaced with no impact to Tool Center Point (TCP), making this upgrade low effort, low risk, and high payoff.

# CONSUMABLES

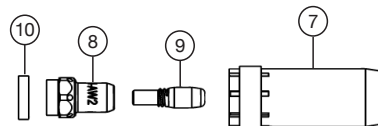
### OPTION A: CENTERFIRE™ SERIES



### OPTION B: QUIK TIP™ SERIES



### OPTION E: ACCULOCK™ SERIES



Item #	Part #	Description
1	DW-1	Centerfire™ diffuser, water-cooled
2	T-045	Centerfire™ contact tip
3	THW-1	Centerfire™ tip holder, water-cooled
4	NW-3418C	Centerfire™ nozzle, water-cooled, 1/8" recess
5	1070101	Quik Tip™ diffuser, water-cooled
6	T1045	Quik Tip™ contact tip
7	5627	Quik Tip™ nozzle, water-cooled, 1/8" recess
8	D-ATSH-AW2	AccuLock™ R diffuser
9	T-A045CH	AccuLock™ contact tip
10	1840003	Insulator

# CONSUMABLES (CONTINUED)

## CONVENTIONAL LINERS FOR SOLID WIRE

<b>L1A-15</b>	for 0.023" (0.6 mm) – 0.030" (0.8 mm) wire; 15' (4.57 m)	<b>L4A-25</b>	for 0.045" (1.2 mm) – 1/16" (1.6 mm) wire; 25' (7.62 m)
<b>L1A-25</b>	for 0.023" (0.6 mm) – 0.030" (0.8 mm) wire; 25' (7.62 m)	<b>L6A-15</b>	for 5/64" (2.0 mm); 15' (4.57 m)
<b>L2A-15</b>	for 0.030" (0.9 mm) – 0.035" (0.9 mm) wire; 15' (4.57 m)	<b>L6A-25</b>	for 5/64" (2.0 mm); 25' (7.62 m)
<b>L2A-25</b>	for 0.030" (0.9 mm) – 0.035" (0.9 mm) wire; 25' (7.62 m)	<b>L7A-15</b>	for 3/32" (2.4 mm); 15' (4.57 m)
<b>L3A-15</b>	for 0.035" (0.9 mm) – 0.045" (1.2 mm) wire; 15' (4.57 m)	<b>L7A-25</b>	for 3/32" (2.4 mm); 25' (7.62 m)
<b>L3A-25</b>	for 0.035" (0.9 mm) – 0.045" (1.2 mm) wire; 25' (7.62 m)	<b>L8A-15</b>	for 7/64" (2.8 mm) – 1/8" (3.2 mm); 15' (4.57 m)
<b>L4A-15</b>	for 0.045" (1.2 mm) – 1/16" (1.6 mm) wire; 15' (4.57 m)	<b>L8A-25</b>	for 7/64" (2.8 mm) – 1/8" (3.2 mm); 25' (7.62 m)

# POWER PINS

## POWER PINS (FOR AW2 MODELS WITH CABLE)

<b>2200008</b>	Bernard®	<b>2200099</b>	Lincoln®	<b>5060</b>	Euro (requires 4816 Nut*)
<b>2200101</b>	Miller® (requires 2200135 Cap*)	<b>2200118</b>	Tweco® #4	<b>2200102</b>	National®
<b>2200098</b>	Hobart®	<b>2200104</b>	Tweco® #5	<b>2200108</b>	OXO™

## POWER PINS (FOR AW2 MODELS WITHOUT CABLE)

<b>2200099</b>	Lincoln®	<b>2200118</b>	Tweco® #4
<b>2200101</b>	Miller® (requires 2200135 Cap*)	<b>2200104</b>	Tweco® #5

\* SOLD SEPARATELY

# COMPONENTS

BARREL LENGTH	INNER BODY	OUTER BODY
<b>9.25", Cable</b>	AW2S-0925	B-1000
<b>12.25", Cable</b>	AW2S-1225	B-1300
<b>9.25", No Cable</b>	1370181A	B-1000
<b>12.25", No Cable</b>	1370181B	B-1300

## CABLE

<b>RPC-XX* or RPC-XX.X**</b>	Power Cable Assembly
<b>RRH-XX* or RRH-XX.X**</b>	Return Hose Assembly
<b>WC2CA-XX* or WC2CA-XX.X**</b>	Conduit Assembly (Replacement O-Ring Part #2040008)
<b>WC2OC-XX* or WC2OC-XX.X**</b>	Outer Jacket Replacement

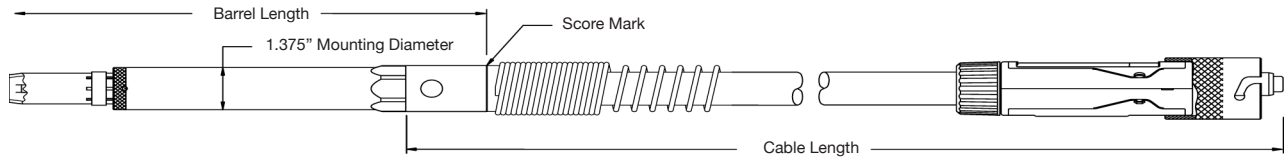
NOTE: LENGTHS AVAILABLE FROM 3' TO 25' IN INCREMENTS OF 0.5'

\*XX REPRESENTS LENGTH (I.E. RPC-03 = 3.0' LENGTH)

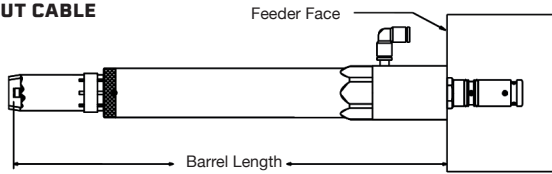
\*\*XX.X REPRESENTS LENGTH (I.E. RPC-05.5 = 5.5' LENGTH)

# MEASURING BARREL LENGTH AND CABLE LENGTH

## WATER-COOLED AUTOMATIC WITH CABLE



## WATER-COOLED AUTOMATIC WITHOUT CABLE



Functional gun length will vary with your choice of consumables. Front end consumable combinations other than the standard consumables can introduce a gun length variance of  $\pm 0.25''$  (6.4 mm). Tolerance on assembled cable length is  $\pm 2''$  (50.8 mm). Length will vary depending upon power pin used.

# ACCESSORIES




## TOUGH GARD ANTI-SPATTER LIQUID



This ready-to-use water-soluble, non-toxic product creates a sacrificial surface that reduces spatter adhesion. This prolongs the life of your consumables and minimizes downtime due to nozzle cleaning which can help reduce your operating and maintenance costs.

<b>TG-101-05</b>	5.28 U.S. Gallon / 20 L
<b>TG-101-55</b>	55 U.S. Gallon / 208 L
<b>TG-101-01</b>	1 U.S. Gallon / 3.78 L
<b>TG-101-32SP</b>	32 fl. oz. / 946 mL (spray bottle)
<b>TG-101-14S</b>	16.9 fl. oz. / 500 mL

# KITS

<b>1880159</b>	<b>Pitch Rack Kit: AWS Style</b>	Includes 32 pitch racks with mounting screws   Requires a minimum gun length of 9.60" (245 mm) and is field installable 
<b>WC2HK-1</b>	<b>Water Cooler Hookup Kit</b>	Includes two 15' hoses and fittings to connect our gun to a water cooler
<b>WC2HK-2</b>	<b>Water Cooler Hookup Kit</b>	Includes 30' hoses and fittings to connect our gun to a water cooler
<b>WC2HK-3</b>	<b>Water Cooler Hookup Kit Hose</b>	3 ft hose

# ORDERING INFORMATION (WITH CABLE)

Water-Cooled Automatic Series			Amp	Cable Length			Power Pin	Barrel Length	Consumables
A	W	2	6	0	4	8	M	A	E
NOTE: TOLERANCE ON ASSEMBLED CABLE LENGTH IS ± 2" SEE PAGE 6 FOR HOW TO MEASURE CABLE LENGTH				036		3.0'	<b>B</b> Bernard™ <b>E</b> Euro <b>H</b> Hobart® <b>L</b> Lincoln® <b>M</b> Miller® <b>N</b> National® <b>O</b> OXO™ <b>T</b> Tweco® #4 <b>W</b> Tweco® #5	A 9.25"	<b>A</b> Centerfire™ Series <b>B</b> Quik Tip™ Series <b>E</b> AccuLock™ Series
				042		3.5'		B *12.25"	
				048		4.0'			
				054		4.5'			
				060		5.0'			
				066		5.5'			
				072		6.0'			
				078		6.5'			
				084		7.0'			
				090		7.5'			
				096		8.0'			
				102		8.5'			
				108		9.0'			
				114		9.5'			
				120		10.0'			
				126		10.5'			
				132		11.0'			
				138		11.5'			
				144		12.0'			
				150		12.5'			
				156		13.0'			
				162		13.5'			
				168		14.0'			
				174		14.5'			
				180		15.0'			
				186		15.5'			
				192		16.0'			
				198		16.5'			
				204		17.0'			
				210		17.5'			
216		18.0'							
222		18.5'							
228		19.0'							
234		19.5'							
240		20.0'							
246		20.5'							
252		21.0'							
258		21.5'							
264		22.0'							
270		22.5'							
276		23.0'							
282		23.5'							
288		24.0'							
294		24.5'							
300		25.0'							

\*ALL AUTOMATICS WITH A GUN LENGTH OF 12.25" WILL ACCEPT A PITCH RACK

# ORDERING INFORMATION (WITHOUT CABLE)

Water-Cooled Automatic Series			Amp	Cable Length			Power Pin	Barrel Length	Consumables
A	W	2	6	0	0	0	M	A	E
NOTE: GUNS WITHOUT CABLE COME WITH 60" WATER HOSES FOR CONNECTION TO WATER CIRCULATOR							<b>L</b> Lincoln® <b>M</b> Miller® <b>T</b> Tweco® #4 <b>W</b> Tweco® #5	<b>A</b> 9.25" <b>B</b> *12.25"	<b>A</b> Centerfire™ Series <b>B</b> Quik Tip™ Series <b>E</b> AccuLock™ Series
							*ALL AUTOMATICS WITH A GUN LENGTH OF 12.25" WILL ACCEPT A PITCH RACK		

BRAND AND PRODUCT NAMES SHOWN ABOVE ARE TRADEMARKS OF THEIR RESPECTIVE OWNERS. TREGASKISS®, ACCULOCK™, TOUGH LOCK®, QUICK LOAD® AND AUTOLENGTH™ ARE TRADEMARKS OF TREGASKISS®, A DIVISION OF ITW CANADA INC. SUBJECT TO CHANGE – THE INFORMATION PRESENTED IN THIS SPEC SHEET IS ACCURATE TO THE BEST OF OUR KNOWLEDGE AT THE TIME OF PRINTING. PLEASE VISIT BERNARDTREGASKISS.COM FOR THE MOST UP-TO-DATE INFORMATION.

DISTRIBUTED BY:

©2024 Tregaskiss®

